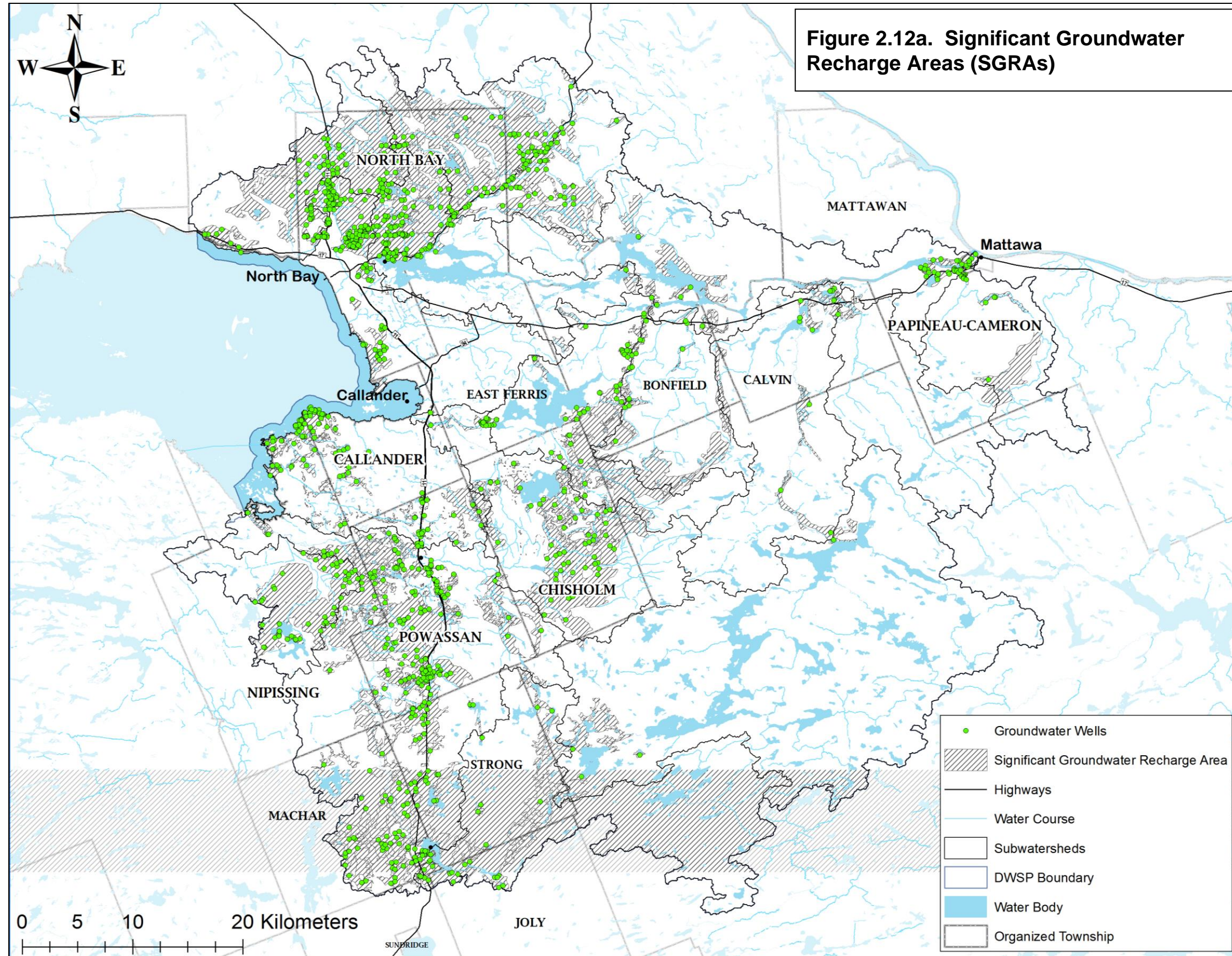


## Appendix A – Selected Maps

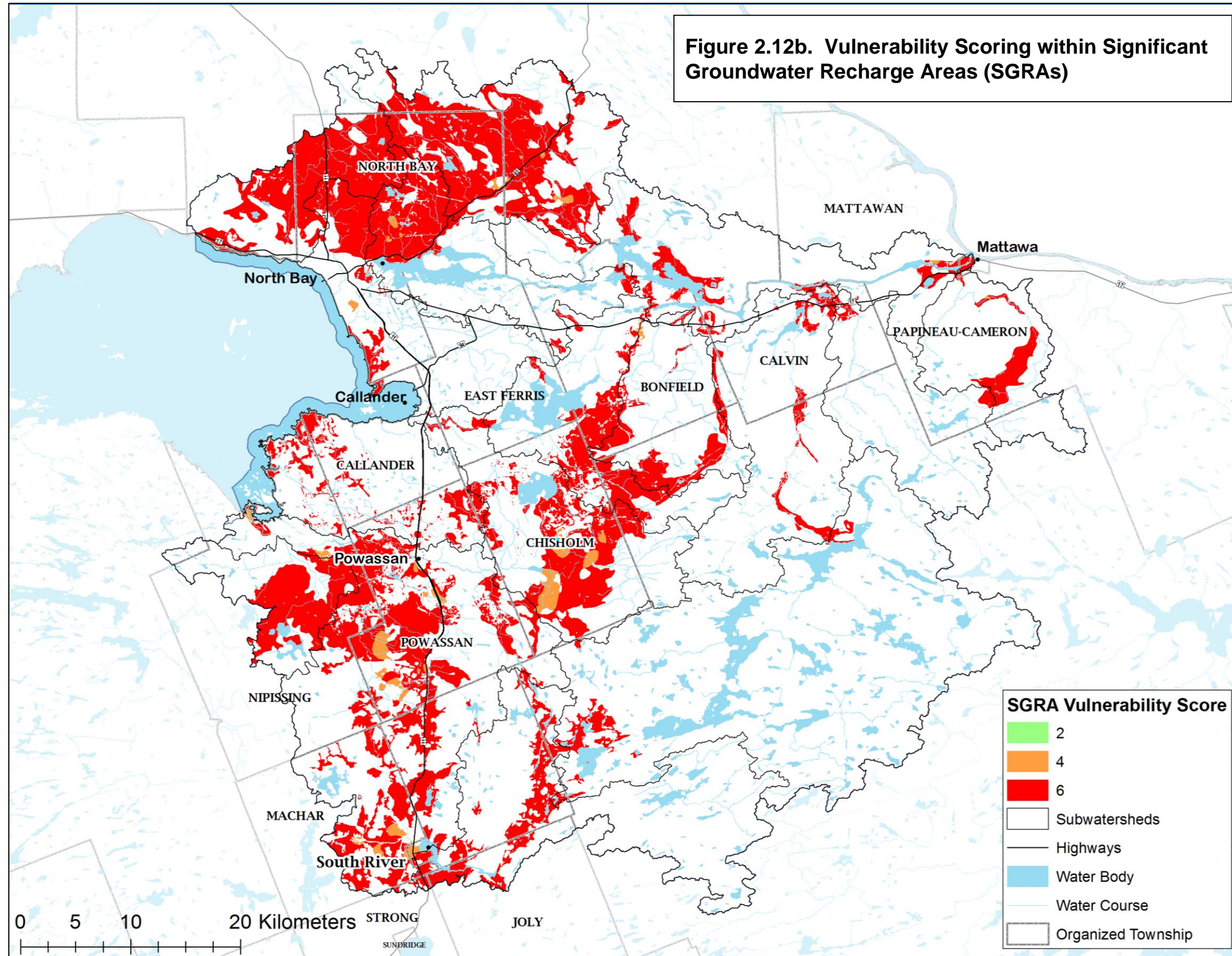
The following maps are reprinted here in larger format for ease of view. If you have any problems viewing these maps, please contact the Source Protection Team at [dwsp.comments@nbmca.on.ca](mailto:dwsp.comments@nbmca.on.ca) or 705 474-5420. Hard copies are also available.

- Figure 2-12a. Significant Groundwater Recharge Areas (SGRAs)
- Figure 2-12b. Significant Groundwater Recharge Areas (SGRAs) & Vulnerability Scores
- Figure 2-13. Highly Vulnerable Aquifers (HVAs)
- Figure 4-6. Callander IPZ 1, 2, and 3 and Vulnerability Scores
- Figure 4-7. Location of Significant Threats Related to Phosphorous and Contributing to the Issue, Microcystin in the Callander Issue Contributing Area
- Figure 6-3. North Bay Significant Groundwater Recharge Areas (SGRA)
- Figure 6-4. North Bay Intake Total Drainage Area
- Figure 8-5. IPZ-3 Subzones and Vulnerability (South River)

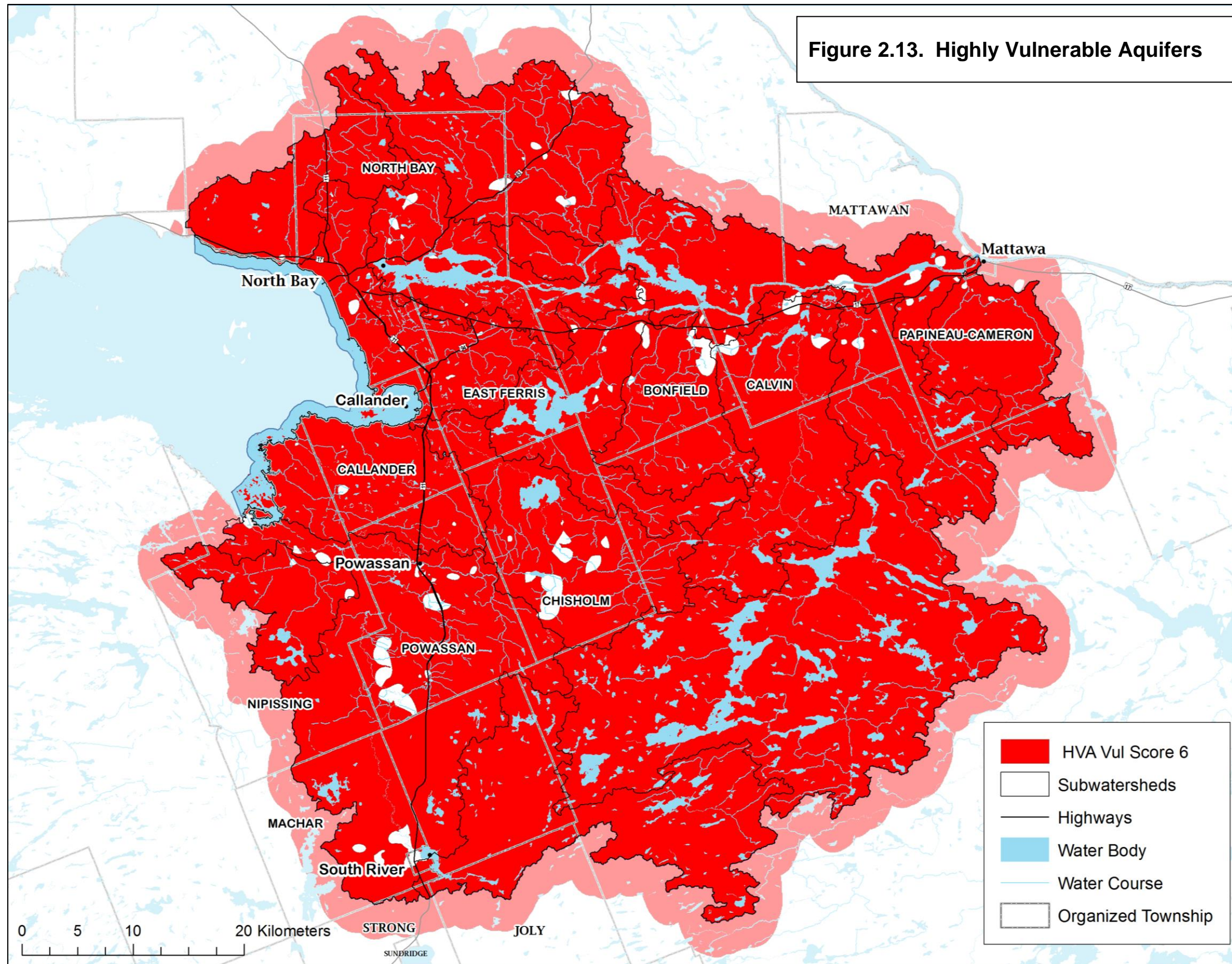




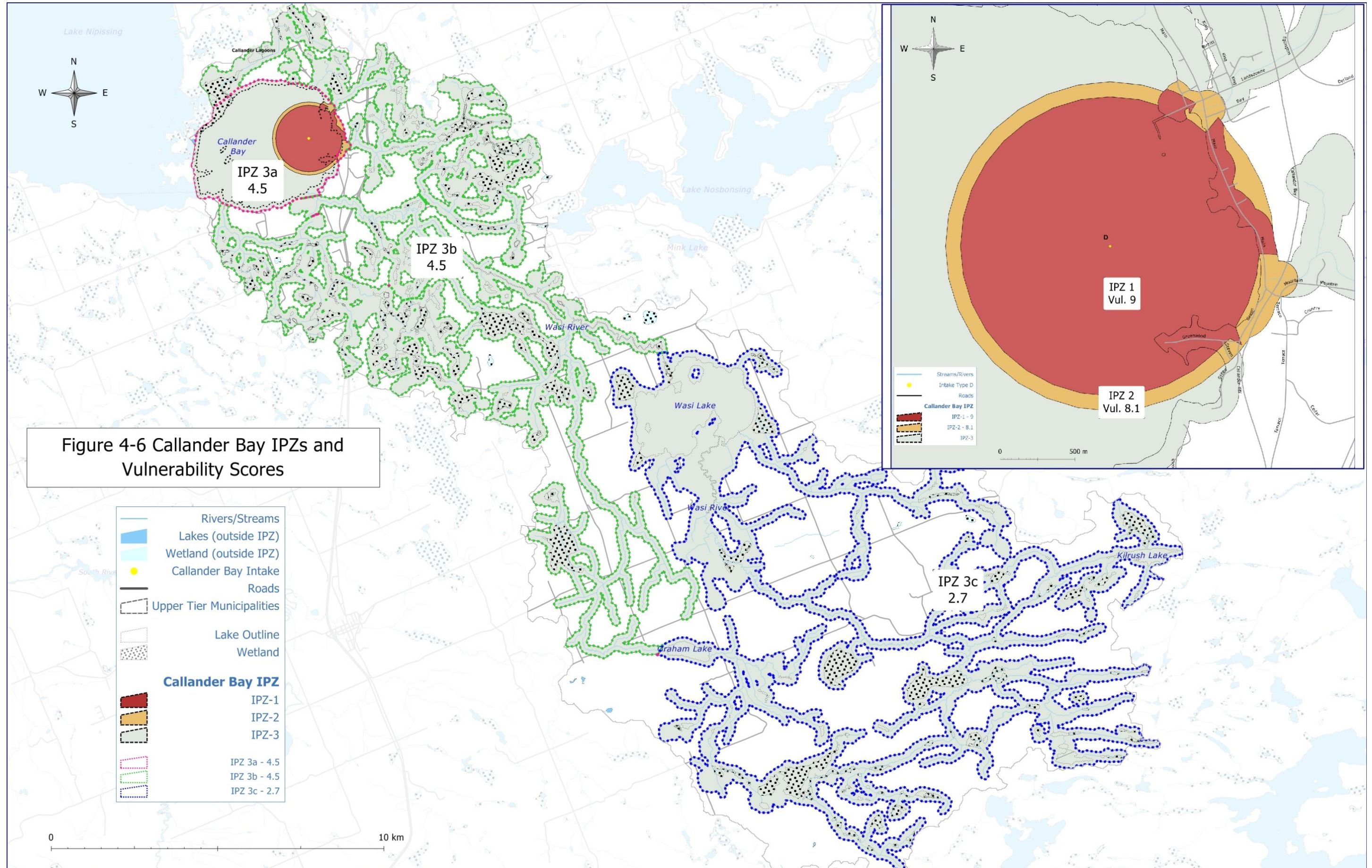




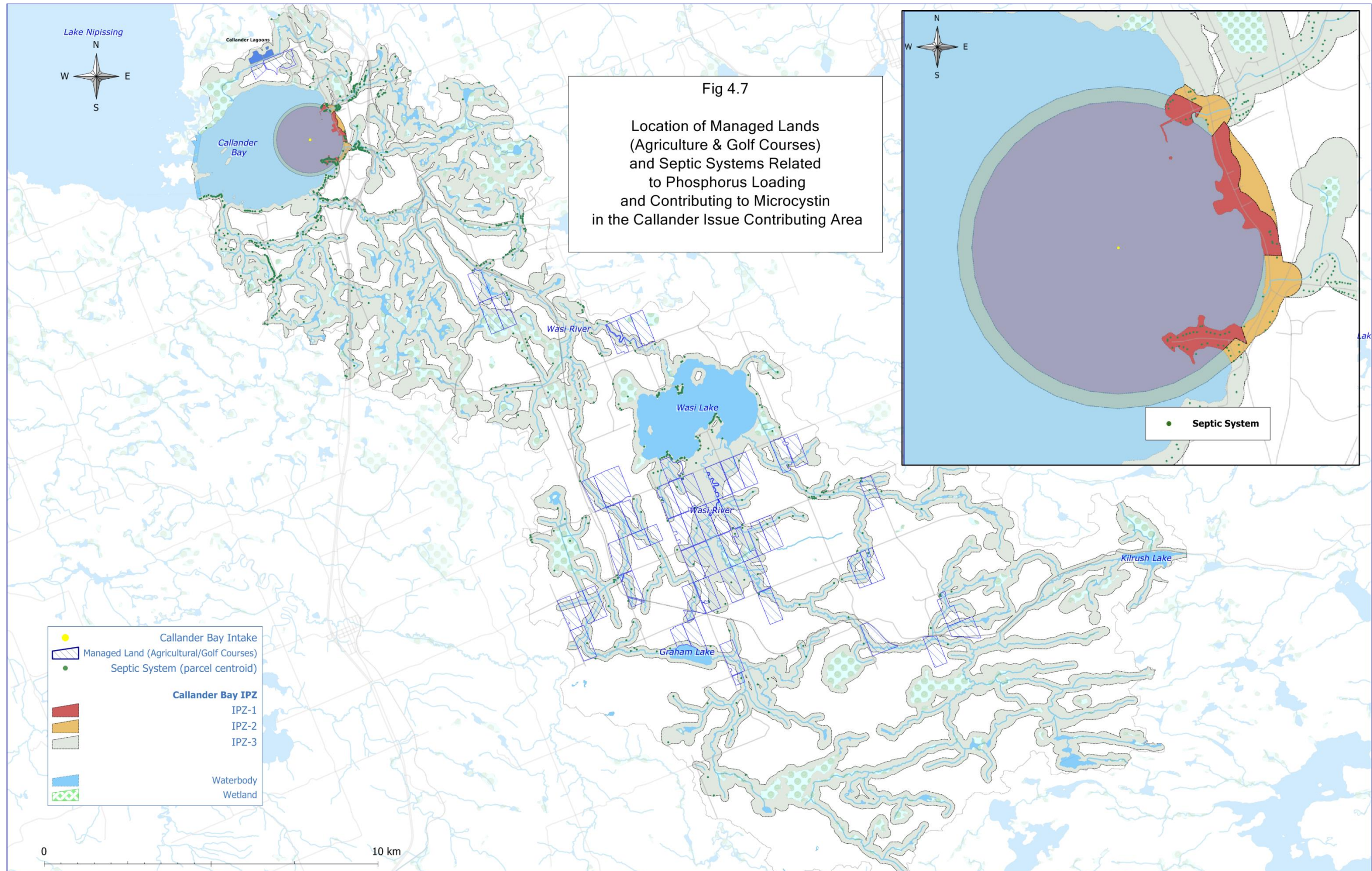




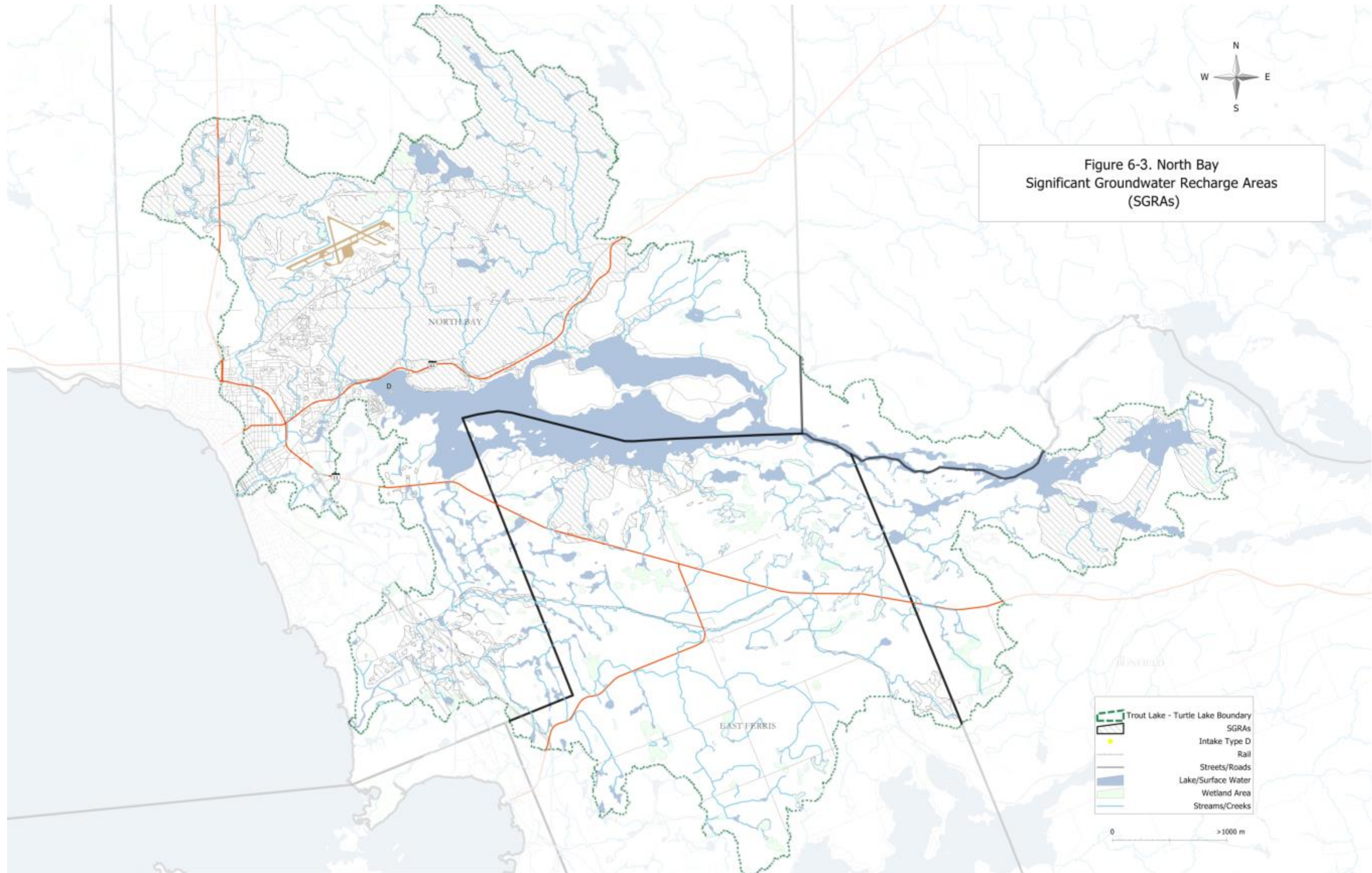














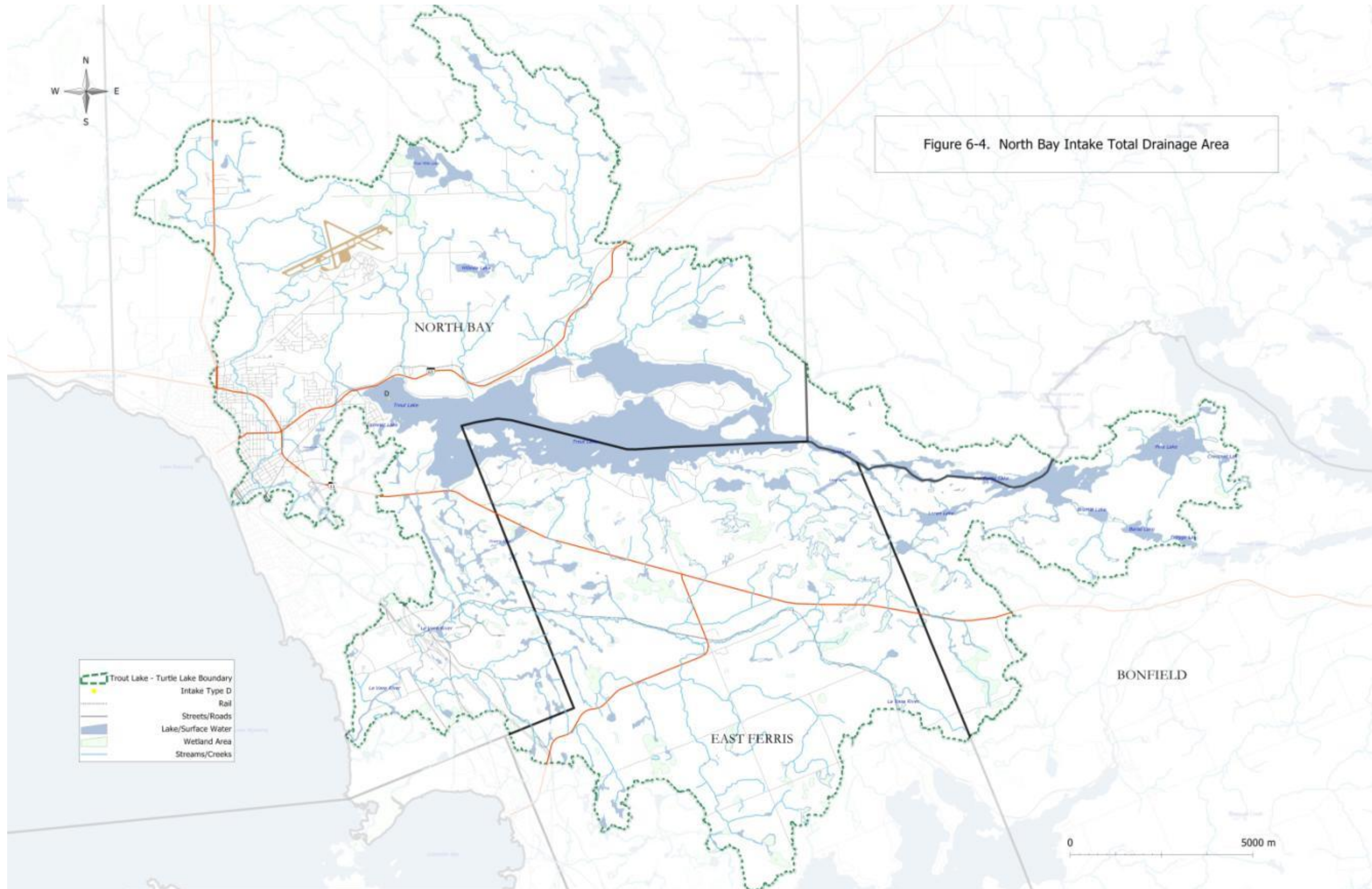




Fig 8-5 : South River IPZ 1,2 and Vulnerability Scores

